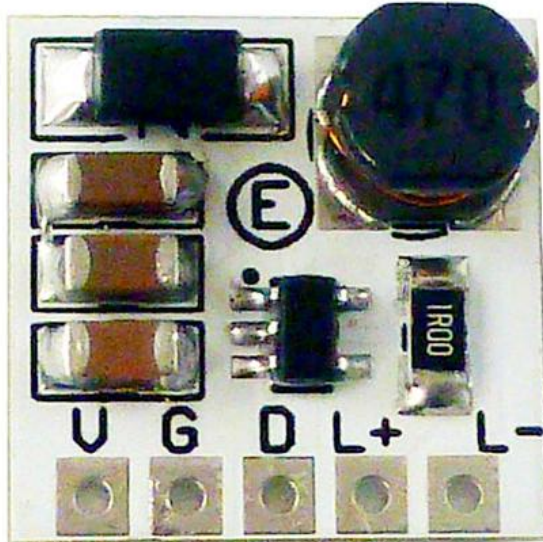


Product Name: mini size DC 5-24V Step-down LED Constant Current Dimming Module PWM Adjustable Controller

Packing list:

1PCS DC 5-28V 350mA Step-down LED Driver Board



Description :

DC5-27V 350mA Step-down HB LED Driver Module

Working voltage : DC 5-27V(Perfect for 5V 6V 9V 12V 18V 24V LED Driver)

Output Current: 0-350mA;By changing the RCS resistance, the maximum drive current can be changed

Maximum output power: 8W

Current regulation: Through PWM control

Single pin ON/OFF and brightness control using PWM

Simple low parts count

Wide input voltage range: 5V to 30V

Up to 350mA output current

PWM dimming

3% output current accuracy.

Up to 1MHz switching frequency

Typical 3% output current accuracy

Inherent open-circuit LED protection

High efficiency (up to 93%)

Adjustable Constant LED Current

High-Side Current Sense

Hysteretic Control: No Compensation

Soft Over Temperature Protection

Size : 15*15*6mm

Weight : 1.5g

Typical Application :

Low voltage halogen replacement LEDs

Automotive lighting

LED back-up lighting

Illuminated signs

Pin Description:

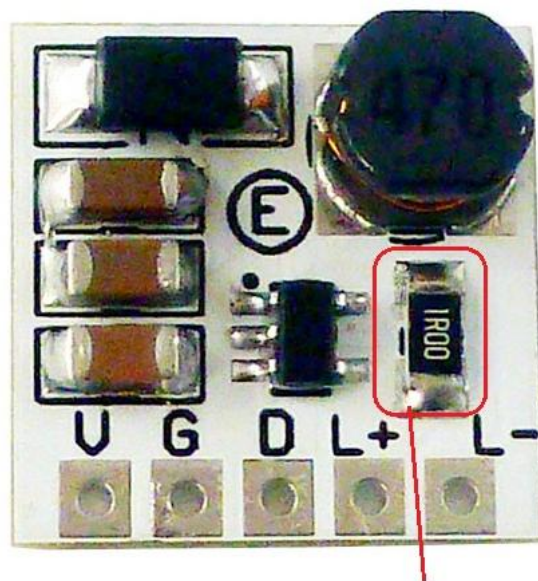
V(VIN) : Power Supply+

G(GND) : Power Supply-

D(DIM) : Logic level dimming input

L+(LED+) : LED+

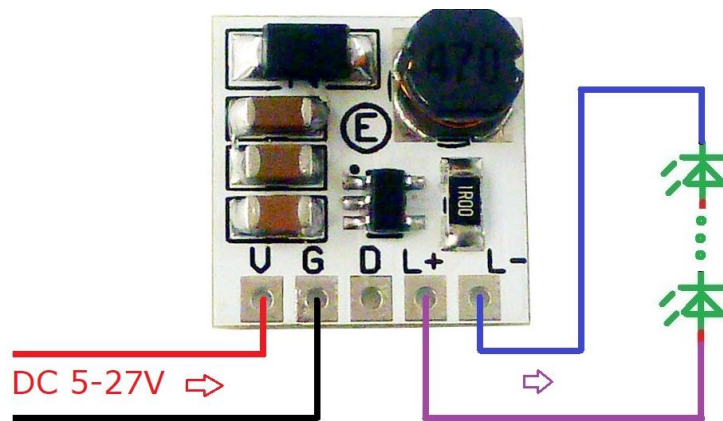
L-(LED-) : LED-



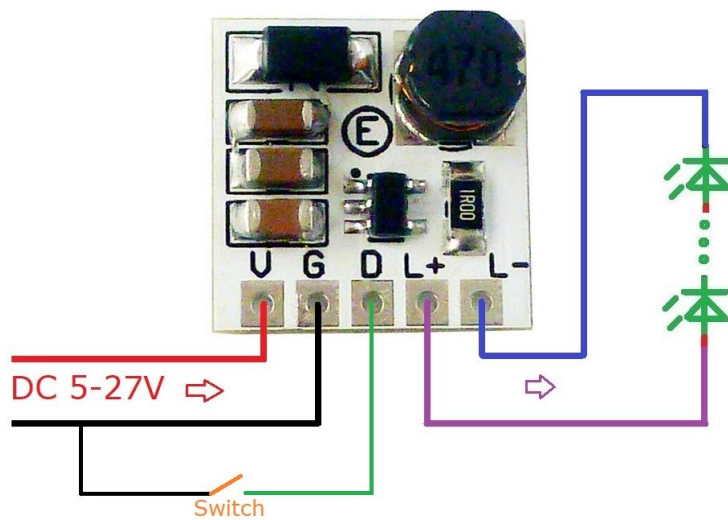
Limit maximum output current
($I_{OUT} = 0.2 / R_{CS}$)

I_{OUT}	RSC
20MA	10 Ω
50MA	4 Ω
100MA	2 Ω
200MA	1 Ω
300MA	0.68 Ω
350MA	0.58 Ω

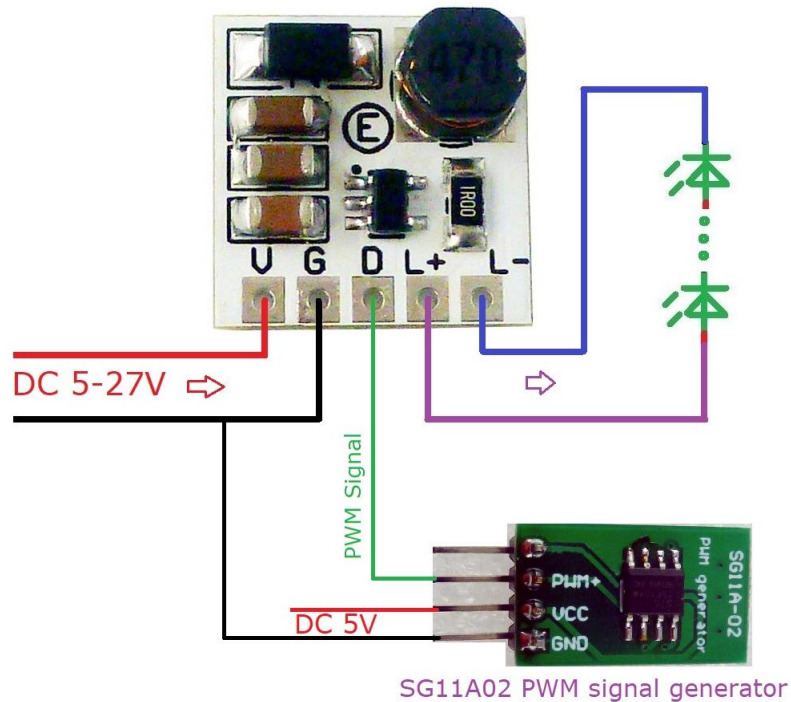
Wiring Diagram 1 : 350MA LED Constant Current Drive Circuit

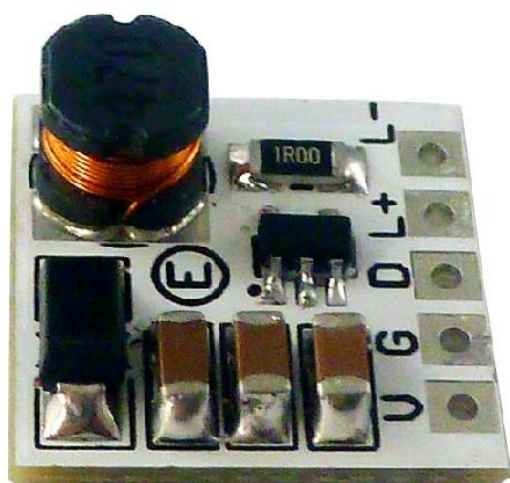
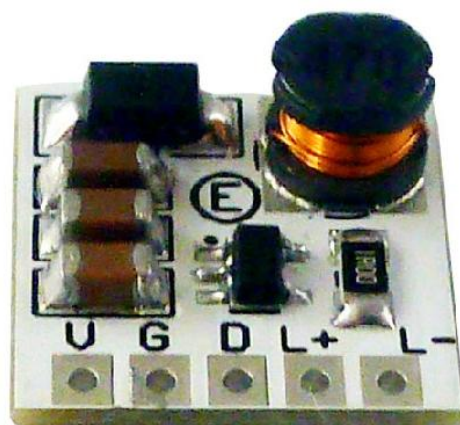
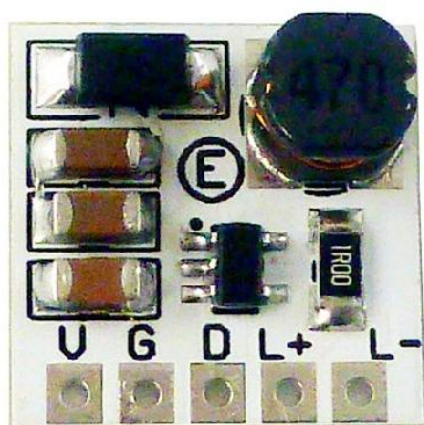


Wiring Diagram 2 : 350MA LED Constant Current Drive Circuit(with switch)



Wiring Diagram 3 : 0-350MA LED PWM Dimming Circuit





Size : 15*15*6mm
Weight : 1.5g

