

1. Connect the dongle

2. Download, install & launch the companion

Get it on www.ctrl-cap.club

If you're using linux, send us an email to get a working version : hello@hlo.io

3. Select your Dongle in the left panel, then select your CTRLCap under the Dongle.

As the dongle and the cap are pre-paired, you should be ready to go.

If you have more than one Dongle or more than one Cap, select the one you want to configure.

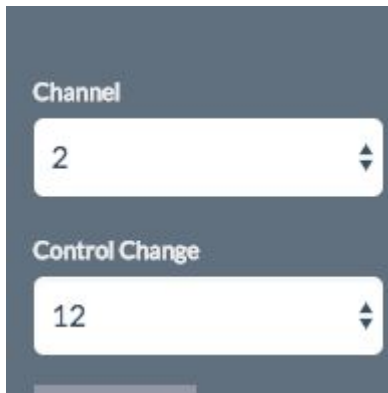
Press the Cap, you should see the value on the graph.

Both the cap and the dongle should blink fast while transmitting.

If the cap blink slowly (every seconds) it means that it doesn't find the dongle, get closer and retry.



4. set the midi message



set the desired MIDI CC number (0 to 127) and channel (1 to 16)

Midi mapping in Ableton Live

1. Open preferences, go to the MIDI pane and activate HLO CTRLCap for TRACK and REMOTE INPUTS



2. Activate the MIDI Mapping mode



3. Select which parameter you want to control

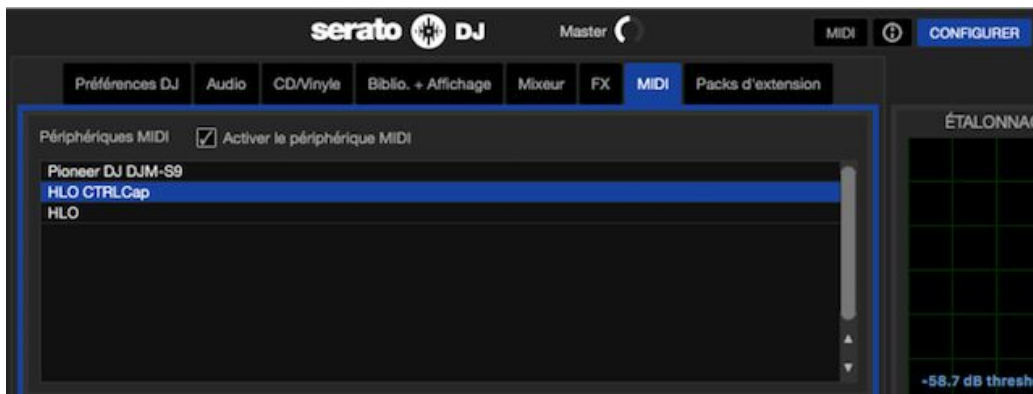


4. Close midi mode



Midi mapping in Serato

1. Activate CTRLCap in the MIDI configuration



2. Enter MIDI Mapping mode and select the parameter you want to control



3. Squeeze the Cap to link it to the parameter



4. Exit the MIDI mapping mode by clicking the MIDI button again.

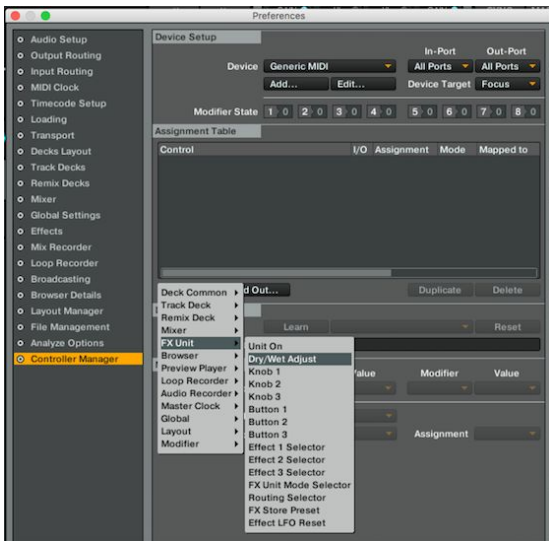


Midi mapping in Traktor

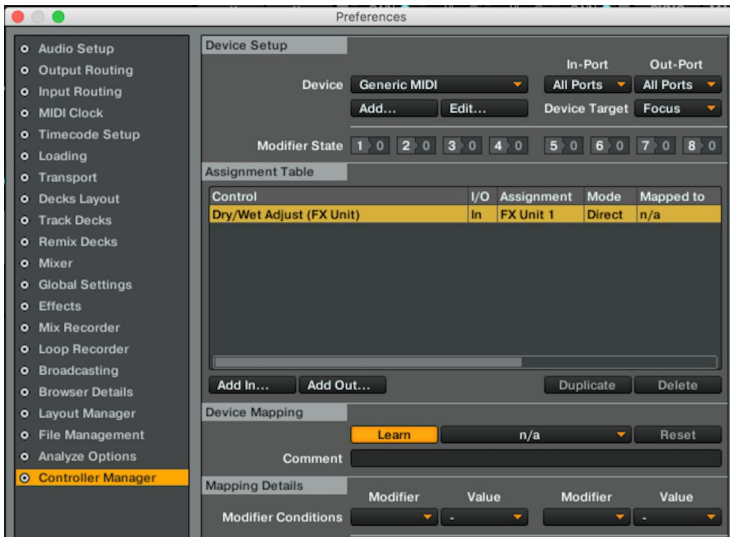
1. Open preferences and check that HLO CTRLCap is available
Choose "All Ports"



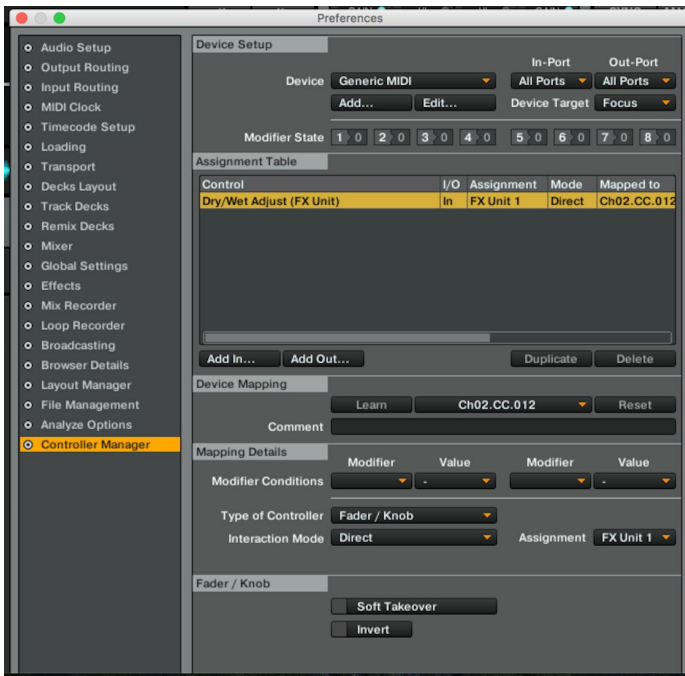
2. Click "Add In" to choose the control



3. Select “Learn” and squeeze the CTRLCap to assign it to the parameter



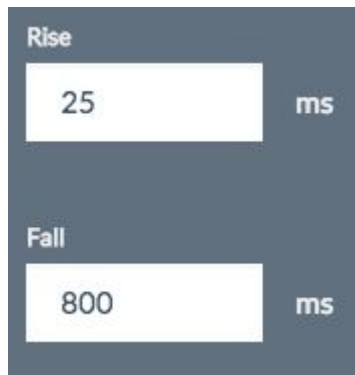
4. Click on “learn” again to quit the midi mapping mode



Tune your midi signal

The signal window allow you to draw the curve that match your feeling. Double click on the line to add point; Drag points to move them; Drag up or down the line between points to change the curve; double click on point to delete them.

Rise & Fall



The image shows a dark blue rectangular window with two sections. The top section is labeled 'Rise' and contains a white input field with the number '25' and the text 'ms' to its right. The bottom section is labeled 'Fall' and contains a white input field with the number '800' and the text 'ms' to its right.

Similar to “Attack” and “Release”

They are expressed in milliseconds. from 0 to 5000

A smaller value give a faster and accurate response.

A larger value smooth out the signal.

Typical Rise and fall values :

General purpose values :

Rise : 5

Fall : 50

Reverb / Delays / Filter great values (fast response, and slow release) :

Rise : 5

Fall : 1000

Soft signal :

Rise : 30

Fall : 100

No filtering

Rise : 0

Fall : 0

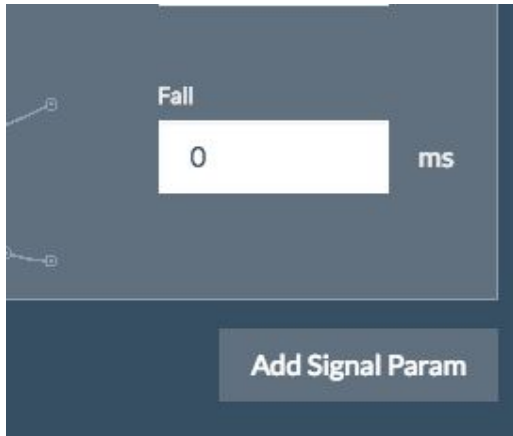
More signals !

A single cap can send up to 3 simultaneous CC midi messages. Each with it's own parameters.

CTRLCap Software QuickStart guide V0.1

ctrl-cap.club

To add a new signal click “Add Signal Param”



Configure each one as you see fit.



Solo and Midi Mapping

When sending multiple CC from one cap, the mapping becomes tricky as each CC compete to be mapped. Use the **solo** mode during the mapping to send only one CC at a time.